

AC METAL-ENCLOSED SWITCHGEARS (≤ 36 kV)

AIR INSULATED METAL-CLAD TYPE SWITCHGEAR (MMC)

Presentation: The MMC air-insulated metal clad switchgear is the ideal solution wherever safe and reliable power distribution is required for medium-voltage indoor applications. It offers;

- Metal-enclosed,
- A high level personal safety,
- A high level operation safety,
- Supply reliability,
- Modular design,
- Extensible,
- Easy erection on site,
- Flexible solution to suit your individual requirements.

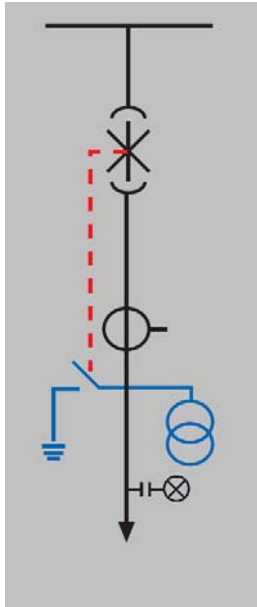


All cubicles are designed to meet all the requirements of IEC/EN standards. Type tests were carried out at accredited laboratories.

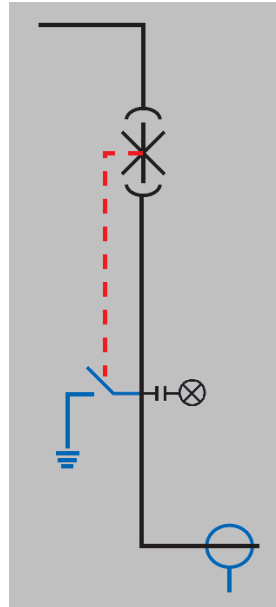
Safety: All compartments of MMC (main switching device compartment, busbar compartment, cable connection compartment and low voltage compartment) are separated metal partitions earthed effectively. Interlocking prevents all kinds of switching faults and allows access only when high voltage parts are dead and earthed. Internal arc effects are restricted to the partitioned compartment concerned. All cubicles are arc-proof

Applications: Primary Substations, Secondary Substations, Pump Stations, Industrial Centers, airports.

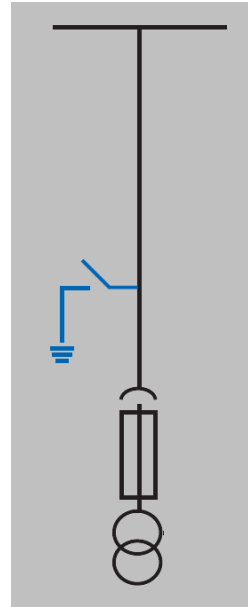
AIR INSULATED METAL-CLAD TYPE SWITCHGEAR (MMC)



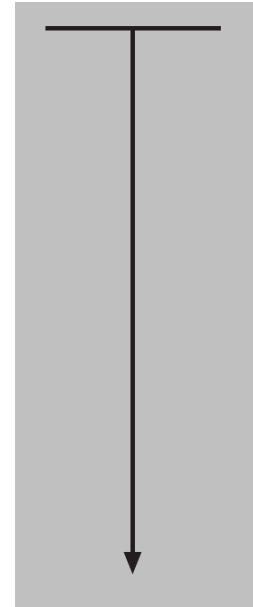
MMC-SP



MMC-KP



MMC-VC



MMC-KB

Cubicle with Circuit Breaker	Bus Coupler Cubicle	Voltage Measurement Cubicle	Cable Connection Cubicle
Fixed/withdrawable Voltage transformer and earthing switch is optional.	Earthing switch is optional	Earthing switch is optional	-

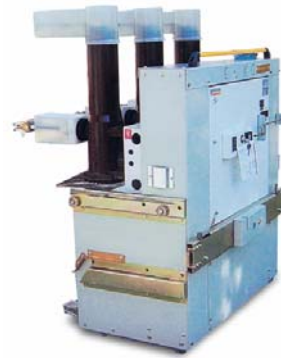
Rated Voltage (kV)	36
Width¹ (mm)	1400 1500 ²
Depth (mm)	1700
Height (mm)	2300

For other versions please ask ELKO.

¹ Changes according to main busbar current

² If main busbar current is 2500 Amper.

AIR INSULATED METAL-CLAD TYPE SWITCHGEAR (MMC)



Technical Characteristics :

Rated Voltage (kV)	36
Type	MMC-36
Rated Current, Main Busbar (A)	630;.....;2500
Rated Current, Branch connector (A)	630;.....;2500
Rated Power Frequency withstand voltage (kV)	70
Rated lightning impulse withstand voltage (kV)	170
Rated short time withstand current	25 kA-1sn
Peak current (kA)	62.5
Loss of Service Continuity	LSC 2B-PM
Internal arc withstand	25 kA, 1 sn
Protection degree (acc. IEC 60529)	<ul style="list-style-type: none">▪ IP 3X on the external enclosure▪ IP 2X inside the compartments
Applied standard	IEC 62271-200

Main switching device such as vacuum or SF 6 gas Circuit Breaker is withdrawable or on truck.

Further technical data, details and for higher performance please ask ELKO.